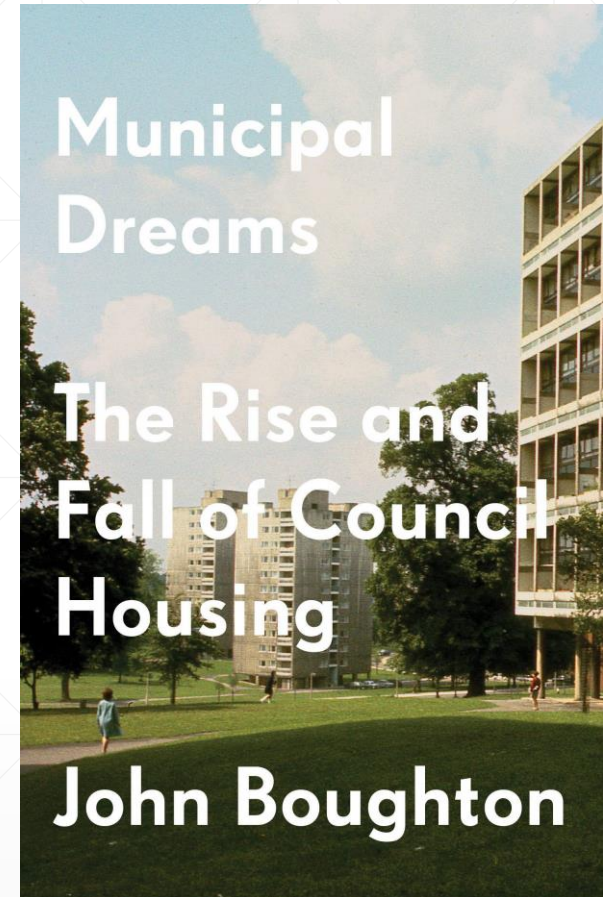


**‘We thought it was
Buckingham Palace’**



Cottage Estates

'Homes for Heroes'



Dover House Estate, Putney, LCC (1919)



Cottage Estates



Alfred and
Ada Salter



Wilson Grove Estate, Bermondsey
Metropolitan Borough Council (1924)

Tenements



WHITE CITY SITE—PART OF PROPOSED ELEVATION, FACING WESTWAY
E. P. Wheeler, Architect to the Council



White City Estate, LCC (1938)



Mixed Development

Somerford Grove, Hackney Metropolitan Borough Council (1949)



Neighbourhood Units

The Lansbury Estate, Poplar, LCC (1951)

Schools



Homes



Shopping Centre



LANSBURY NEIGHBOURHOOD

MAP REVIEW 104,
JUNE 16, 1951



Many of our towns and cities suffer from the dire consequences of the Industrial Revolution in the middle and the quarter of the past century. In the last few decades we have tried various makeshift remedies - "slum-clearances" for the better, "garden cities" for the better. Neither really worked, and the plans which have been made for rebuilding after the destruction by bombing have taken a new form - neighbourhood planning.

A sense of community, of neighbourly responsibility, unifies an essential human need. People do not just want to be alone, they also do so. They need schools, parks, shops, markets, churches, public buildings, parks, theatres and places to work within easy range. Different kinds of families, too, need different kinds of homes - flats and houses both large and small, for big families, old people, single people, and so on. A neighbourhood if it is to live, needs all these, and they should be related to one another in situation and design.

The County of London Plan published in 1945 works on the principle of creating "neighbourhoods" in the Plan by means of Program and Program areas which are to be related to the form of these new neighbourhoods. Part of the Plan of these, Lansbury in Poplar, is now being built in the City Architectural Exhibition at the Palace of Science. Visitors will be able to see the site being built while the people already living there go about their daily life.



Post-War Flats

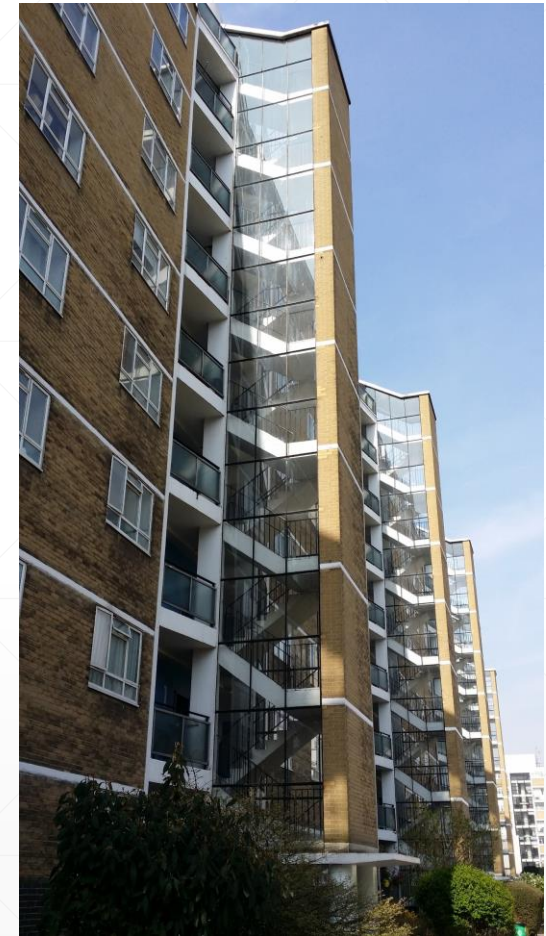
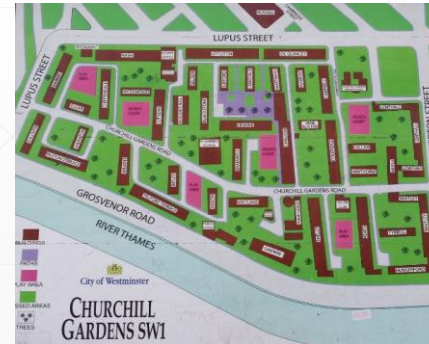
Spa Green Estate, Finsbury Metropolitan Borough Council (1949)



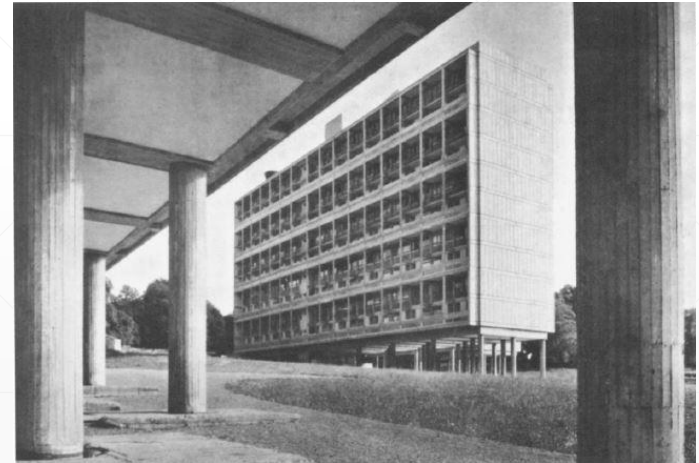
Berthold Lubetkin

Post-War Flats

Churchill Gardens Estate, City of Westminster (1951)



Architectural Wars



Alton East, Roehampton, LCC (1951)

Alton West, Roehampton, LCC (1953)

Multi-Storey Housing

Dawson's Heights, Southwark Borough Council (1972)



Kate Macintosh



The Small Estate

Chinbrook Estate, Lewisham, LCC (1965)



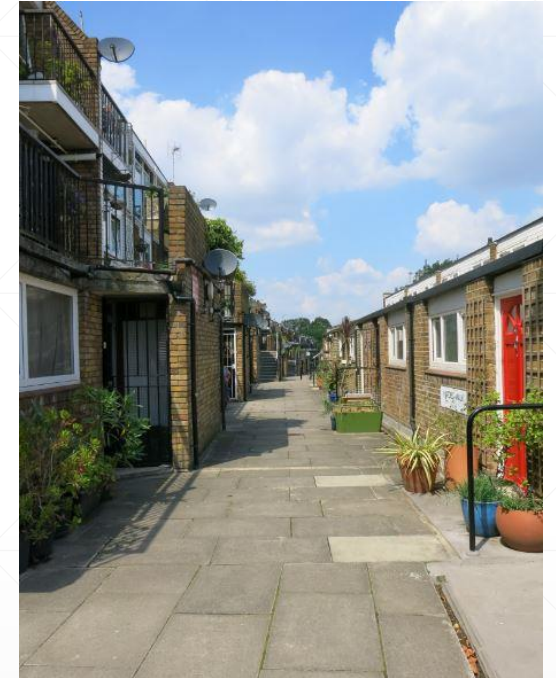
Low-Rise, High Density



Central Hill (1974)



Lambeth Borough Council



Cressingham Gardens (1978)

Low-Rise, High Density

Camden Borough Council



Branch Hill Estate (1978)

Alexandra Road Estate (1979)

Whittington Estate (1981)

Passivhaus

Goldsmith Street, Norwich City Council (2018)



Mixed Communities



You have castrated communities. You have colonies of low income people, living in houses provided by the local authorities, and you have the higher income groups living in their own colonies. This segregation of the different income groups is a wholly evil thing, from a civilised point of view... We should try to introduce what was always the lovely feature of English and Welsh villages, where the doctor, the grocer, the butcher and the farm labourer all lived in the same street – the living tapestry of a mixed community.

Nye Bevan

'The key to successful communities is a good mix of people: tenants, leaseholders and freeholders. The Pepys Estate was a monolithic concentration of public housing and it makes sense to break that up a bit and bring in a different mix of incomes and people with spending power.'

Pat Hayes, LB Lewisham, Director of Regeneration



'Buckingham Palace'

Gascoyne Estate, Hackney (1948)



'The room, the space, the facilities, it was wonderful. From where we'd come from it was paradise, a silly thing to say but it really was. We thought it was Buckingham Palace.'

Aylesbury Estate, Southwark (1970)



'Coming to the new estate for most of us at that time was like Shangri-La ... we thought we was moving into Buckingham Palace.'